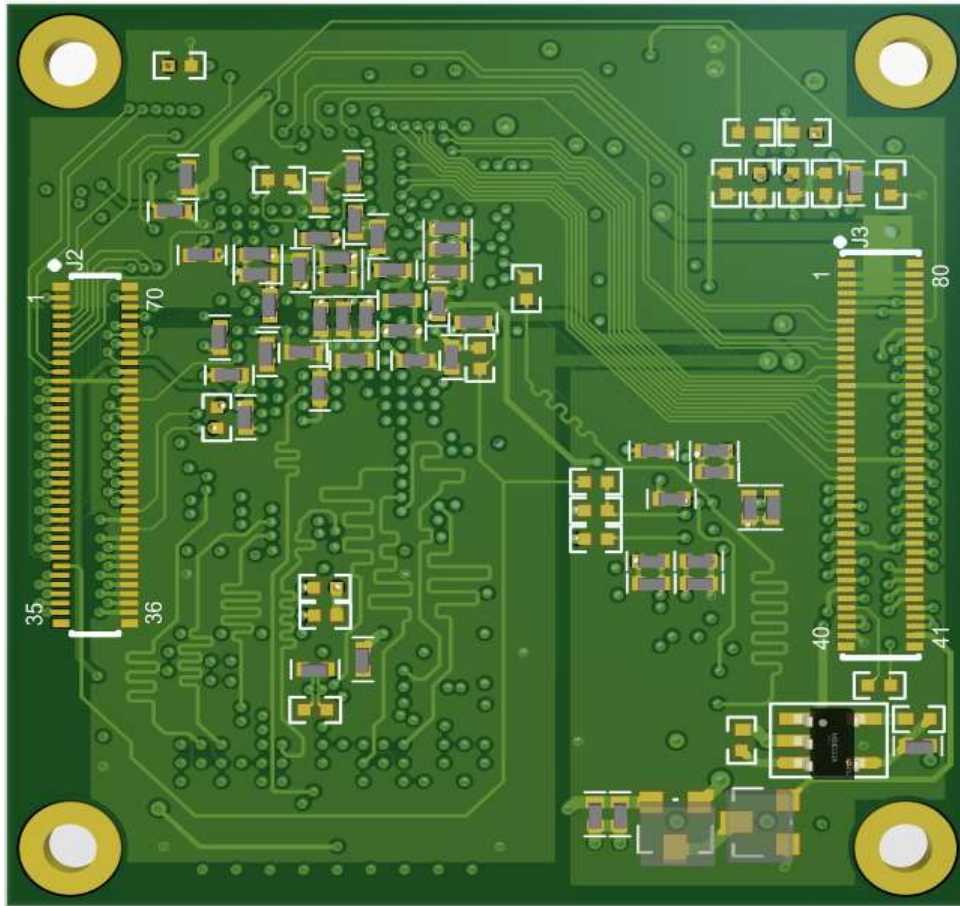


GT6003扩展引脚图V1.0

J2			
1	DCOM	70	DCOM
2	FEL	69	PD19
3	HP_DET	68	PD18
4	HPOUFB	67	PD17
5	HPOUTL	66	PD16
6	HPOUTR	65	PD15
7	HBIAS	64	PD14
8	GPADC0	63	PD13
9	GPADC1	62	PD12
10	DCOM	61	DCOM
11	LINEINR	60	PD11
12	LINEINL	59	PD10
13	LINEOUTRP	58	PD9
14	LINEOUTRN	57	PD8
15	LINEOUTLP	56	PD7
16	LINEOUTLN	55	PD6
17	FMINR	54	PD5
18	FMINL	53	PD4
19	DCOM	52	DCOM
20	MIC_DET	51	PD3
21	MICIN1N	50	PD2
22	MICIN1P	49	PD1
23	MICIN2N	48	PD0
24	MICIN2P	47	PD21
25	MICIN3N	46	PD22
26	MICIN3P	45	PD20
27	MBIAS	44	PB7
28	DCOM	43	DCOM
29	AVCC	42	PB6
30	RESET	41	PB5
31	PB12	40	PB4
32	PB11	39	PB3
33	PB10	38	PB2
34	PB9	37	PB1
35	PB8	36	PB0



J3			
1	VCC	80	VCC
2	VCC	79	VCC
3	VCC	78	VCC
4	DCOM	77	DCOM
5	DCOM	76	DCOM
6	LRADC	75	TVOUT
7	TP_X1	74	TVIN0
8	TP_Y1	73	TVIN1
9	TP_X2	72	USB1_DM
10	TP_Y2	71	USB1_DP
11	PG0	70	USB0_DM
12	PG1	69	USB0_DP
13	DCOM	68	DCOM
14	PG2	67	PE14
15	PG3	66	PE11
16	PG4	65	PE10
17	PG5	64	PE9
18	PG6	63	PE15
19	PG7	62	PE7
20	PG8	61	PE6
21	DCOM	60	DCOM
22	PG9	59	PE8
23	PG10	58	PE4
24	PG11	57	PE5
25	PG12	56	PE2
26	PG13	55	PE1
27	PG14	54	PE3
28	PG15	53	PE0
29	PG16	52	PE16
30	DCOM	51	DCOM
31	PG17	50	PE12
32	PG18	49	PE13
33	PF6	48	PE17
34	PF5	47	PC1
35	PF4	46	PC0
36	PF3	45	PF0
37	PF2	44	PF1
38	DCOM	43	DCOM
39	DCOM	42	DCOM
40	D3V3	41	VBAT

注释

- 绿色为GND引脚
- 红色为电源引脚
- 黄色为普通IO
- 紫色为特殊功能引脚

洛阳银杏科技有限公司
 洛阳市涧西区蓬莱路国家大学科技园B区7-202号
 电话: 0379-69926675, 邮箱: ginkgo@vip.163.com