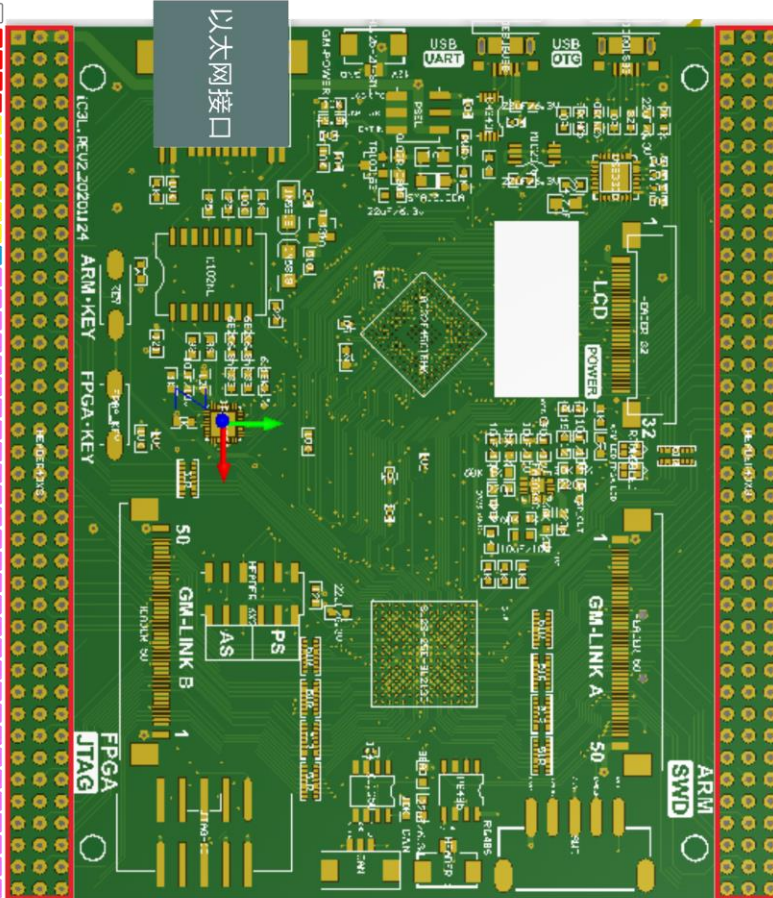


iCore3L扩展引脚注释图

序号	第一列	第二列	第三列
1	NC	VIN	VIN
2	GND	VCC	VCC
3	3.3V	3.3V	3.3V
4	GND	1.8V	1.8V
5	GND	PG10	PH11
6	GND	PG12	PG11
7	3.3V	PI6	PI5
8	GND	PI10	PI7
9	NC	PH1	PF10
10	GND	CLK_24M	PA4
11	3.3V	ARM_KEY	CLK_25M
12	GND	B4	A4
13	D11	B3	A3
14	GND	A1	A2
15	3.3V	B1	B2
16	GND	D5	C5
17	G2	D4	D3
18	GND	C1	E3
19	3.3V	D1	D2
20	GND	E1	E2
21	G1	J6	J5
22	GND	J3	H1
23	3.3V	K3	K2
24	GND	L2	L1
25	J1	M2	M1
26	GND	K4	K5
27	3.3V	L3	K7
28	GND	N2	N1
29	J2	P2	P1
30	GND	M4	L4
31	3.3V	M5	N4
32	GND	L5	N5
33	P8_INPUT	R1	R2
34	GND	P3	R3
35	3.3V	P4	R4
36	GND	P5	R5
37	NC	N6	P6
38	GND	P7	R8
39	GND	M6	L6
40	NC	L7	K9



第一列	第二列	第三列	序号
USBFS_DM	USBFS_DP	NC	1
P12	P11	GND	2
P10	PH15	3.3V	3
PH13	PG6	GND	4
PH12	PH10	NC	5
PH9	PG7	GND	6
P18	PA9	3.3V	7
PG3	PB8	GND	8
PH7	PH6	NC	9
PF6	ARM_LEDG	GND	10
ARM_LEDG	ARM_LEDB	3.3V	11
E13	E12	GND	12
F12	E11	B12	13
G11	F11	GND	14
J10	G10	3.3V	15
FPGA_LEDG	FPGA_LEDR	GND	16
G14	FPGA_LEDB	G14_INPUT	17
D14	C15	GND	18
E14	D15	3.3V	19
F13	E15	GND	20
L13	F14	G15_INPUT	21
J11	K11	GND	22
J13	K12	3.3V	23
K13	K14	GND	24
L14	L15	J14_INPUT	25
M14	M15	GND	26
N14	N15	3.3V	27
P14	P15	GND	28
M13	L12	J15_INPUT	29
M11	M12	GND	30
L11	N11	3.3V	31
N9	M10	GND	32
L9	N8	N7_INPUT	33
R14	R15	GND	34
R13	P13	3.3V	35
R12	P12	GND	36
R11	P11	NC	37
P10	N10	GND	38
R9	P9	GND	39
R7	L10	NC	40

注释:

- 绿色为GND脚
- 红色为电源脚
- 黄色为ARM扩展脚
- 紫色为FPGA扩展脚
- 蓝色为其他引脚
- 棕色为悬空引脚, 无引脚功能